



Scholarship  
upto **90%**  
based on Test Score



Cash  
Reward  
for Top Rankers



# ALLEN SHARP

**ALLEN's** Scholarship Test and Reward Program

**ALLEN<sup>®</sup>** SAMPLE PAPER  
for Students of

**Class VI, VII, VIII, IX, X & XI(Science)**

**SAMPLE TEST  
PAPER**

STUDYING IN

**CLASS VII**

**CLASS VII MOVING TO VIII**



**NEET UG | JEE (Main + Advanced) | OLYMPIADS | CLASS 6<sup>th</sup> To 10<sup>th</sup>**

**ALLEN CAREER INSTITUTE (HYDERABAD)**

**HYDERABAD CAMPUS**  
Floor Number 3, Sri Venkata Sai Complex,  
1-62/ 33/34, Kavuri Hills Rd, Madhapur, Hyderabad,  
Telangana 500033, India (Beside Indwell House)

**ALLEN SOUTH REGIONAL OFFICE**  
#36, 15th Cross, 3rd Block, Near South End Circle, Opp. Central  
Library, Jayanagar - 560011

**Helpline : +91-9902901234 | [www.allen.ac.in/hyderabad](http://www.allen.ac.in/hyderabad)**

**Corporate Office: "SANKALP", CP-6, Indra Vihar, Kota (Rajasthan)-324005 | Contact: 0744-2757575 | E-Mail: [info@allen.ac.in](mailto:info@allen.ac.in)**

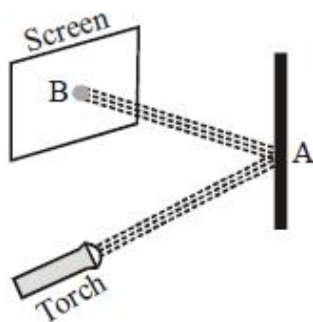
SECTION-A : PHYSICS

This section contains **15 Multiple Choice Questions**. Each question has four choices (1), (2), (3) and (4) out of which **ONLY ONE** is correct.

1. Choose from the option(s) given in the figure which shows the correct direction of conventional current.

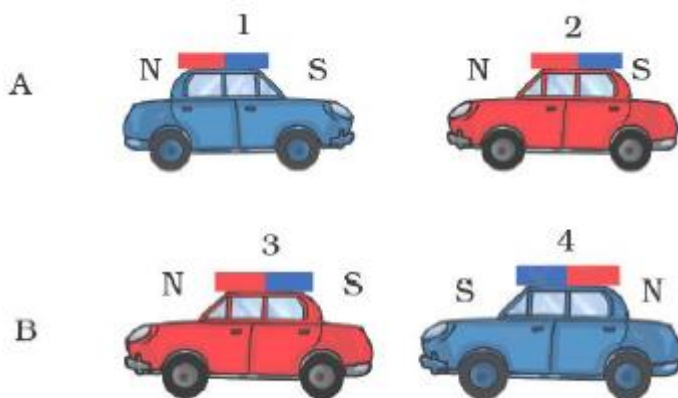


2. Observe the picture given in figure carefully. A patch of light is obtained at B, when the torch is lighted as shown. Which of the following is kept at position A to get this patch of light?



- (1) A wooden board
- (2) A glass sheet
- (3) A mirror
- (4) A sheet of white paper

3. Observe the pictures A and B given in figure carefully.



Which of the following statement is correct for the above given pictures?

- (1) In A, cars 1 and 2 will come closer and in B, cars 3 and 4 will come closer.
- (2) In A, cars 1 and 2 will move away from each other and in B, cars 3 and 4 will move away.
- (3) In A, cars 1 and 2 will move away and in B, 3 and 4 will come closer to each other.
- (4) In A, cars 1 and 2 will come closer to each other and in B, 3 and 4 will move away from each other.

4. Like charges ..... and unlike charges ..... each other

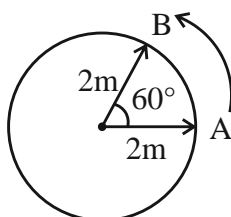
- (1) Repel, Attract
- (2) Attract, Repel
- (3) Attract, Attract
- (4) Repel, Repel

5. How many capital alphabets does not show lateral inversion?

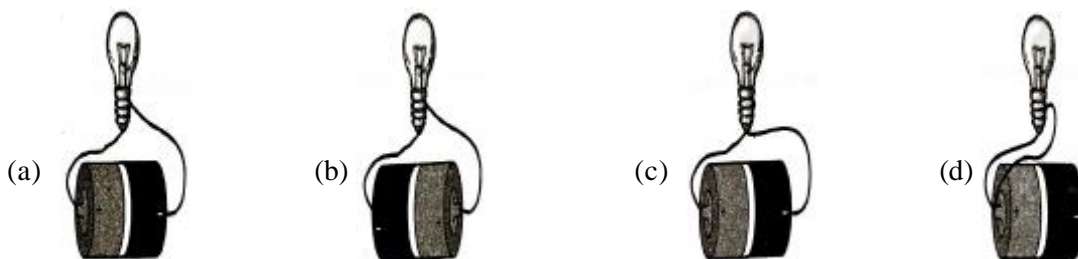
- (1) 10
- (2) 11
- (3) 13
- (4) 9

CLASS - VII

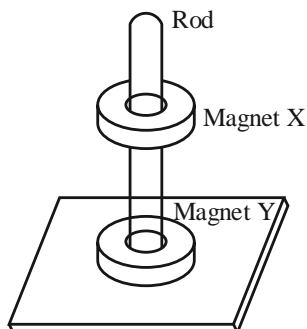
6. Change of water into vapour is called :  
 (1) Evaporation (2) Melting  
 (3) Condensation (4) All the above
7. The earth completes one revolution in  
 (1) 366 days (2) 370 days  
 (3)  $365 \frac{1}{4}$  days (4) 28 days
8. Resistance in wires causes electrical energy to be converted into which form of energy ?  
 (1) Chemical energy (2) Nuclear energy  
 (3) Heat energy (4) Sound energy
9. A word is placed in front of plane mirror. If the image of word is same as actual word then word is  
 (1) P Q S (2) A T H  
 (3) A H A (4) Both 2 and 3 are correct
10. A body moving in a circular path having radius 2m. Find his displacement when he moves from A to B as shown in figure



- (1) 2m (2) 60R  
 (3)  $\frac{\pi R}{3}$  (4) 4m
11. 1 : 20 P.M. = \_\_\_\_\_ in 24 hour format.  
 (1) 13:20 (2) 14:20  
 (3) 15:20 (4) 16:20
12. Select the figure which the current will flow through the electric circuit?



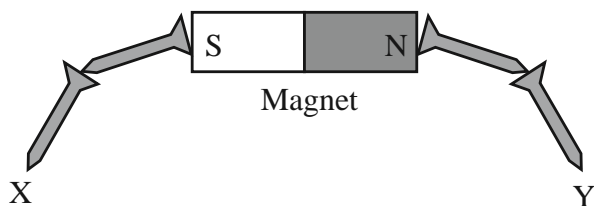
- (1) (a) and (d) (2) (b) and (c)  
 (3) (a) and (b) (4) (a), (b) and (d)
13. Two ring magnets, X and Y are connected through a rod as shown below. Magnet X floats above magnet Y because



- (1) Magnet X is lighter than magnet Y  
 (2) Magnet X is more powerful than magnet Y  
 (3) The like poles of both magnets are facing each other  
 (4) The unlike poles of both magnets are facing each other

CLASS - VII

14. Observe the figure given below. The polarity of ends X and Y are respectively



- (1) North pole and north pole  
 (2) North pole and south pole  
 (3) South pole and north pole  
 (4) South pole and south pole
15. Mercury is a convenient liquid to use in a barometer because
- (1) It is a metal  
 (2) It is a high boiling point  
 (3) It expands little with temperature  
 (4) It has a high density

### SECTION-B : CHEMISTRY

This section contains **15 Multiple Choice Questions**. Each question has four choices (1), (2), (3) and (4) out of which **ONLY ONE** is correct.

16. Which of the following acid is used in fire extinguishers?
- (1) Hydrochloric acid  
 (2) Sulphuric acid  
 (3) Nitric acid  
 (4) Oxalic acid
17. Calamine solution is applied on the skin when an ant bites. The calamine is \_\_\_\_\_ .
- (1)  $Mg(OH)_2$   
 (2)  $ZnO$   
 (3)  $ZnCO_3$   
 (4)  $Ca(OH)_2$
18. Acids
- (1) Have bitter taste  
 (2) Turn red litmus blue  
 (3) Turn purple cabbage juice red  
 (4) Change turmeric colour to red
19. Digestion of food in the body is an example of
- (1) Decomposition reaction  
 (2) Combination reaction  
 (3) Displacement reaction  
 (4) Redox reaction
20. Which of the following is called oil of vitriol?
- (1) Nitric acid  
 (2) Sulphuric acid  
 (3) Carbonic acid  
 (4) Hydrochloric acid
21. The last step in waste water treatment is a \_\_\_\_\_ process.
- (1) Biological  
 (2) Mechanical  
 (3) Chemical  
 (4) Physical
22. Which one of the following is a strong electrolyte?
- (1) Carbon disulphide  
 (2) Ammonium hydroxide  
 (3) Water  
 (4) Sodium chloride
23. The chemical used to disinfect water is
- (1) Washing soda  
 (2) Coal  
 (3) Silica  
 (4) Chlorine
24. Removal of thin fleece of sheep is known as
- (1) Shearing  
 (2) Sorting  
 (3) Scouring  
 (4) Rearing
25. To reduce the acidity of soil, we can add
- (1) Caustic soda  
 (2) Caustic potash  
 (3) Quick lime  
 (4) Sulphuric acid
26. When HCl is poured over Zn granules
- (1)  $Zn(OH)_2$  is formed  
 (2)  $H_2O$  is formed along with zinc chloride  
 (3)  $H_2$  is evolved along with  $ZnCl_2$   
 (4) None of these



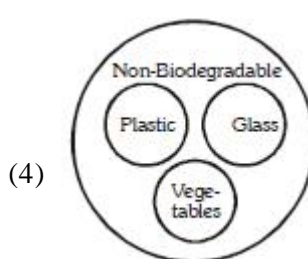
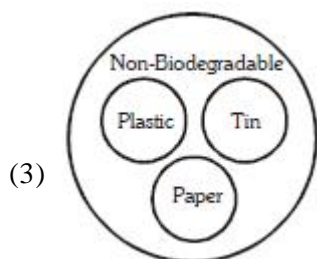
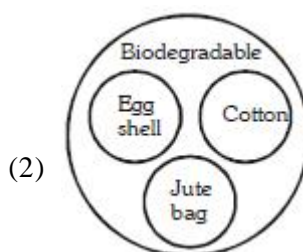
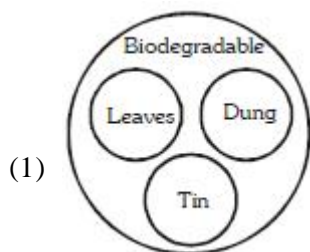
CLASS - VII

27. Separation of seeds from cotton bolls is called  
 (1) Winnowing (2) Ginning  
 (3) Weaving (4) Spinning
28. Complete the following reaction :  $\text{Na} + \text{H}_2\text{O} \rightarrow$   
 (1)  $\text{NaOH} + \text{H}_2$  (2)  $\text{Na}_2\text{O}$   
 (3)  $\text{Na}_2\text{O} + \text{NaOH}$  (4) No reaction occurs
29. All are physical changes except  
 (1) Dissolution of NaCl in water (2) Dissolution of sugar in water  
 (3) Burning of magnesium in air (4) Mixing sand and water
30. The density of water is  
 (1)  $0.1 \text{ g/cm}^3$  (2)  $1 \text{ g/cm}^3$   
 (3)  $100 \text{ g/cm}^3$  (4)  $1 \text{ g/m}^3$

**SECTION-C : BIOLOGY**

This section contains **15 Multiple Choice Questions**. Each question has four choices (1), (2), (3) and (4) out of which **ONLY ONE** is correct.

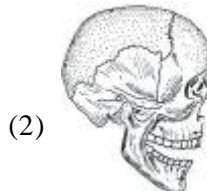
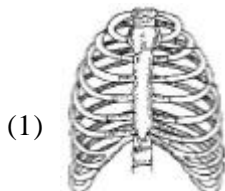
31. Which one of these is correct ?



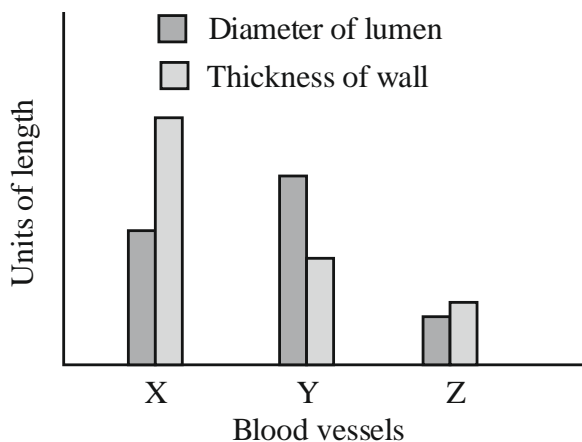
32. The hardest structure of the human body is  
 (1) Cartilage (2) Dentine  
 (3) Enamel (4) Muscles
33. A diet high in saturated fats can be linked to which of the following ?  
 (1) Kidney failure (2) Anaemia  
 (3) Scurvy (4) Cardiovascular diseases
34. Why roots are poorly developed in aquatic plants ?  
 (1) They become damaged due to excess water  
 (2) They help them to float  
 (3) Since they grow in water they don't need long roots to absorb water  
 (4) None of these
35. \_\_\_(i)\_\_\_ is required for making bones and teeth harder. It's deficiency causes \_\_\_(ii)\_\_\_. Bleeding gums occurs due to deficiency of \_\_\_(iii)\_\_\_. \_\_\_(iv)\_\_\_ controls the functioning of thyroid gland.  
 (1) (i) Iron, (ii) Rickets, (iii) Vitamin A, (iv) Iodine  
 (2) (i) Calcium, (ii) Bone and tooth decay, (iii) Vitamin C, (iv) Iodine  
 (3) (i) Calcium, (ii) Bone and tooth decay, (iii) Vitamin D, (iv) Iodine  
 (4) (i) Iodine, (ii) Goiter, (iii) Vitamin C, (iv) Iron

CLASS - VII

36. The joint which allows movement in all the directions is called  
 (1) Pivotal joint (2) Hinge joint  
 (3) Ball and socket (4) Gliding joint
37. In fishes \_\_\_\_\_ offers least resistance to forward movement through water.  
 (1) Strong muscles (2) Tail and fins  
 (3) Bones (4) Streamlined body shape
38. The number of seeds in a fruit depends on  
 (1) Number of ovules in ovary (2) Number of fertilised ovules in ovary  
 (3) Number of stamens in flower (4) All of these
39. Which one of the following structure protect lungs?



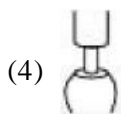
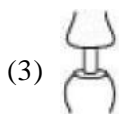
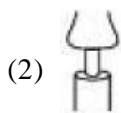
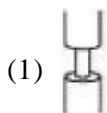
40. Statement-I: Sea animals like fishes have gills.  
 Statement-II: Gills in fishes enable them to use oxygen dissolved in water for breathing.  
 (1) Statement-I and statement-II are true.  
 (2) Statement-I is true and statement-II is false.  
 (3) Statement-I is false and statement-II is true.  
 (4) Both the statements are false.
41. Select the mismatch from the following options  
 (1) *Sundew* – symbiotic (2) *Cuscuta* - Parasitic plant  
 (3) *Nepenthes* – insectivorous plant (4) Cattle-Herbivore
42. The given graph shows measurements of different types of blood vessels (X, Y and Z), Select the incorrect option regarding these.



- (1) Blood vessels of type Y have valves.  
 (2) Blood vessels of type X carry blood away from the heart.  
 (3) Blood vessels of type Z connect an X to a Y.  
 (4) Blood vessels of type X are superficially placed and blood vessels of type Y are deep seated in the body.

CLASS - VII

43. In insects, exchange of gases takes place through:-  
 (1) Spiracles (2) Stomata  
 (3) Bronchi (4) Alveoli
44. Riya's father has undergone surgical removal of gall bladder due to some complications. Now, he will not be able to digest \_\_\_\_\_.  
 (1) Proteins efficiently because pepsin will not be produced.  
 (2) Fats efficiently  
 (3) Carbohydrates efficiently because HCl that activates amylase function will not be produced.  
 (4) Both (1) and (3)
45. A thick outer ring is removed from the trunk of a tree. Which of the following is likely to be observed after several days?



**SECTION-D : MATHEMATICS**

This section contains **15 Multiple Choice Questions**. Each question has four choices (1), (2), (3) and (4) out of which **ONLY ONE** is correct.

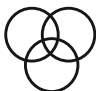
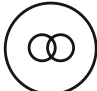


46.  $pqr$  is what type of polynomial ?  
 (1) Monomial (2) Binomial  
 (3) Trinomial (4) None of these
47. What degree does  $x^3 - x^2y^2 - 8y^2 + 2$  have ?  
 (1) 2 (2) 3  
 (3) 4 (4) 7
48. Which of the following is the value of 'm' in  $6^m / 6^{-3} = 6^5$   
 (1) -3 (2) -2  
 (3) 3 (4) 2
49. Which of the following is equal to 1 kilolitre ?  
 (1) 1000 millilitres (2)  $100 \text{ dm}^3$   
 (3)  $1 \text{ dm}^3$  (4)  $1000 \text{ dm}^3$
50. On what a discount is calculated ?  
 (1) SP (2) CP  
 (3) Marked Price (4) None of these
51. What should be the percentage of gain on a product when it is sold for rs. 120 with a gain of rs. 20 ?  
 (1) 20 % (2) 25 %  
 (3) 22 % (4) 16.25 %
52. (o, y) is the coordinates of a point lying on which of the following ?  
 (1) origin (2) X - axis  
 (3) Y - axis (4) None
53. If  $\frac{1}{x} : \frac{1}{y} : \frac{1}{z} = 2 : 3 : 5$  then  $x : y : z =$   
 (1) 2 : 3 : 5 (2) 15 : 10 : 6  
 (3) 5 : 3 : 2 (4) 6 : 10 : 15
54. If  $(a + b) : (a - b) = 15 : 1$ , find the value of  $a^2 - b^2$   
 (1)  $\frac{15b^2}{49}$  (2)  $2b^2$   
 (3)  $\frac{13b^2}{49}$  (4)  $\frac{17b^2}{8}$

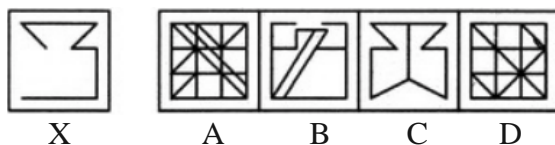
CLASS - VII

55. How many lines of symmetry does the letter Z have?  
 (1) 0 (2) 1  
 (3) 2 (4) 4
56. Sum of two integers is 10 and sum of its reciprocals is  $\frac{5}{12}$ . Identify the larger of the two integers.  
 (1) 2 (2) 4  
 (3) 6 (4) 8
57. If 26% of  $450 - x = 12\%$  of 150, then identify value of 'x'.  
 (1) 101 (2) 135  
 (3) 89 (4) 99
58. The LCM of 0.5, 0.75 and 1 is  
 (1) 1 (2) 2  
 (3) 3 (4) 4
59. If  $A : B = 5 : 6$ ,  $B : C = 2 : 5$ ,  $C : D = 6 : 11$ , then  $A : D =$   
 (1)  $5 : 11$  (2)  $2 : 11$   
 (3)  $3 : 11$  (4)  $15 : 32$
60. 'A' is the 5<sup>th</sup> prime number and 'B' is the 7<sup>th</sup> prime number, then  $B - A = ?$   
 (1) 6 (2) 8  
 (3) 12 (4) 2

**SECTION-E : IQ (MENTAL ABILITY)**

This section contains **20 Multiple Choice Questions**. Each question has four choices (1), (2), (3) and (4) out of which **ONLY ONE** is correct.

61. What should come in place of question mark (?) in the following number series?  
 132    156    ?    210    240    272  
 (1) 196 (2) 182  
 (3) 199 (4) 204
62. Which of the following Venn- diagram correctly illustrates the relation ship among the classes : Tennis fans, Cricket players, Students
- (1)  (2) 
- (3)  (4) 
63. In a certain code language COMPUTER is written as RFUVQNPC. How will MEDICINE be written in that code language?  
 (1) MFEDJJOE (2) EOJDEJFM  
 (3) MFEJDJOE (4) EOJDJEFM
64. Choose the number pair/group which is different from others?  
 (1) 7 : 22 (2) 12 : 37  
 (3) 8 : 33 (4) 15 : 46
65. Find out the alternative figure which contains figure (X) as its part.



- (1) A (2) B  
 (3) C (4) D





CLASS - VII

72. Which letter is sixteenth to the right of the letter which is fourth to the left of I?

- (1) S (2) T  
(3) U (4) V

73. Select the combination of numbers so that the letters arranged accordingly will form meaningful word:

P	N	O	A	C	L	M	I
1	2	3	4	5	6	7	8

- (1) 2, 7, 8, 6, 4, 3, 1, 5 (2) 4, 7, 5, 2, 6, 8, 1, 3  
(3) 5, 3, 7, 1, 6, 4, 8, 2 (4) 7, 1, 8, 5, 6, 2, 4, 3

74. How many 7s immediately preceded by 6 but not immediately followed by 4 are there in the following series.

7 4 2 7 6 4 3 6 7 5 3 5 7 8 4 3 7 6 7 2 4 0 6 7 4 3

- (1) One (2) Two  
(3) Four (4) Six

75. A class of boys stands in a single line. One boy is nineteenth in order from both the ends. How many boys are there in the class?

- (1) 27 (2) 37  
(3) 38 (4) 39

76. Arrange the following in a logical order:

- A. Frog B. Eagle  
C. Grasshopper D. Snake  
E. Grass

- (1) A, C, E, B, D (2) C, D, B, E, A  
(3) E, C, A, D, B (4) E, C, D, B, A

77.

5	5	2
2	4	1
8	3	10
40	30	?

- (1) 10 (2) 12  
(3) 13 (4) 20

78. Five persons - A, B, C, D and E are sitting in a row. Who is sitting in the middle

- I. B is between E and C  
II. B is to the right of E.  
III. D is between A and E.

- (1) Only I and II (2) Only II and III  
(3) Only I and III (4) All I, II, and III

79. Directions : Choose the odd pair of words.

- (1) Gold : Ornaments (2) Earthen pots : Clay  
(3) Wood : Furniture (4) Leather : Footwear

80. Directions : In each of the following question, arrange the given words in the sequence and then choose the correct sequence.

- (a) Repoint (b) Reptile  
(c) Repent (d) Repute

- (1) c, a, e, b, d (2) c, e, a, b, d  
(3) e, a, d, c, b (4) e, d, a, c, b

ANSWER KEY

TEST DATE:

PHYSICS	Q. No.	1	2	3	4	5	6	7	8	9	10	11	12	13	14	15										
	Ans.	2	3	4	1	2	1	3	3	4	1	1	3	3	3	4										
CHEMISTRY	Q. No.	16	17	18	19	20	21	22	23	24	25	26	27	28	29	30										
	Ans.	2	3	3	1	2	3	4	4	1	3	3	2	1	3	2										
BIOLOGY	Q. No.	31	32	33	34	35	36	37	38	39	40	41	42	43	44	45										
	Ans.	2	3	4	3	2	3	4	2	1	1	1	4	1	2	2										
MATHS	Q. No.	46	47	48	49	50	51	52	53	54	55	56	57	58	59	60										
	Ans.	1	3	4	4	3	1	3	2	1	1	3	4	3	2	1										
MAT	Q. No.	61	62	63	64	65	66	67	68	69	70	71	72	73	74	75						76	77	78	79	80
	Ans.	2	1	4	3	1	4	3	4	1	3	3	3	3	2	2						3	1	4	2	1